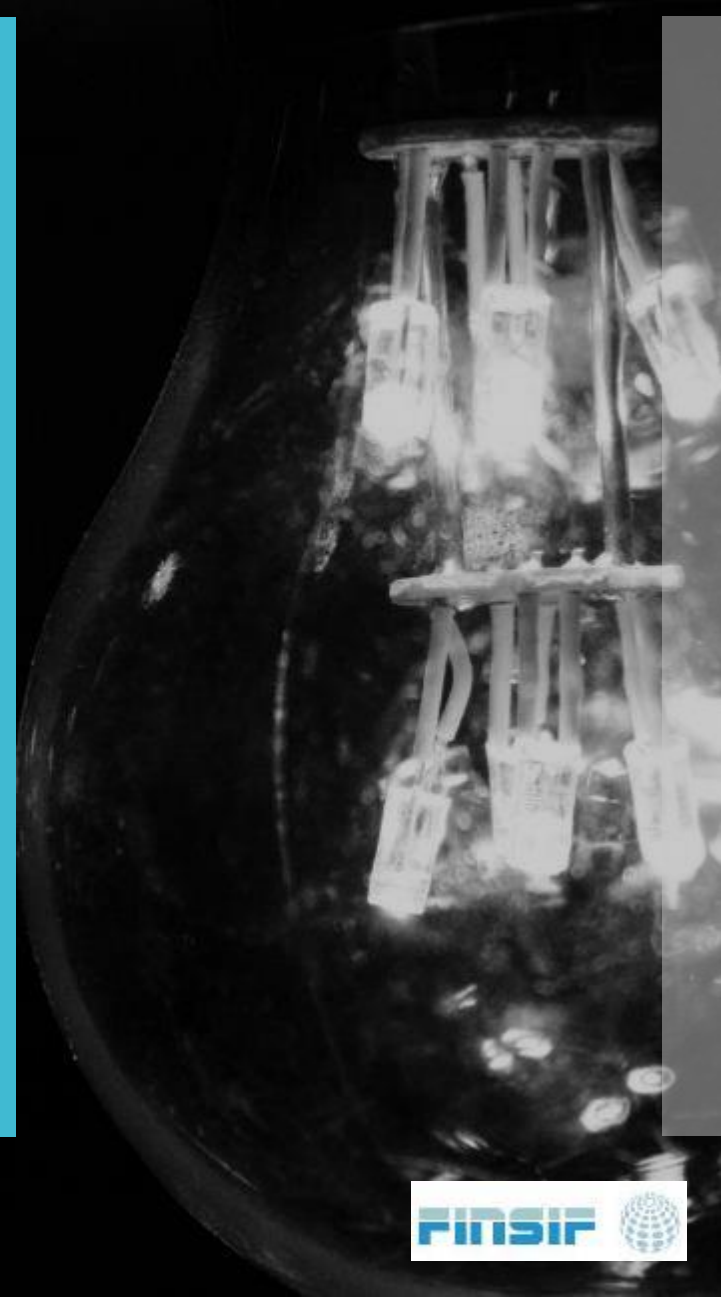


FINSIF – 2016-2017

Outi Kalpio, Chairperson of the board

www.finsif.fi

14.10.2016



What are our main goals & activities?

- Organizing events on topical ESG themes for our members
- Providing information and education to our members
- Promoting responsible investing in Finland
- Supporting academic research on responsible investing, in Finland

What have we achieved in 2016? - events

Events on various ESG themes:

- 10.5 ESG ratings for companies & investment funds
- 18.5 Academic: Added value from auditing CSR reports?
- 27.5 PRI workshop: Next Decade of PRI
- 5.9 SDGs in business (with FIBs etc)
- 13.10 Annual Seminar : FI, proxy voting, AI , environment etc
- 14.10 Nordic Sif Meeting: Nordic Swan Ecolabel, Climpax

Coming up...

- IR event (with IR association)
- Academic event: Finsif Research Grants
- Statutory Autumn meeting: water risks

What have we achieved in 2016 - communication

- We have updated our website, to better serve our members
- We have updated our communication strategy
 - No value judgements
 - Distribute information iro emerging ESG issues, best practices etc
 - More (pro) –active: Blogs , twitter activity
- We are working on a review of inclusion of responsible investment in University education in Finland – co-operation with Nordic Sifs
- We are working on an investor guide on responsible investing – to be released in 2016

What have we achieved in 2016— co-operation

- Finsif is represented in Sitra's Impact Investing Steering Group
- Finsif is one of the organisers in CSR Reporting competition 2016
- Finsif is co-operating with Aalto University: Student case studies on ESG
- Finsif has awarded grants to 7 students or researchers for academic research on RI themes

What have we achieved in 2016 - admin

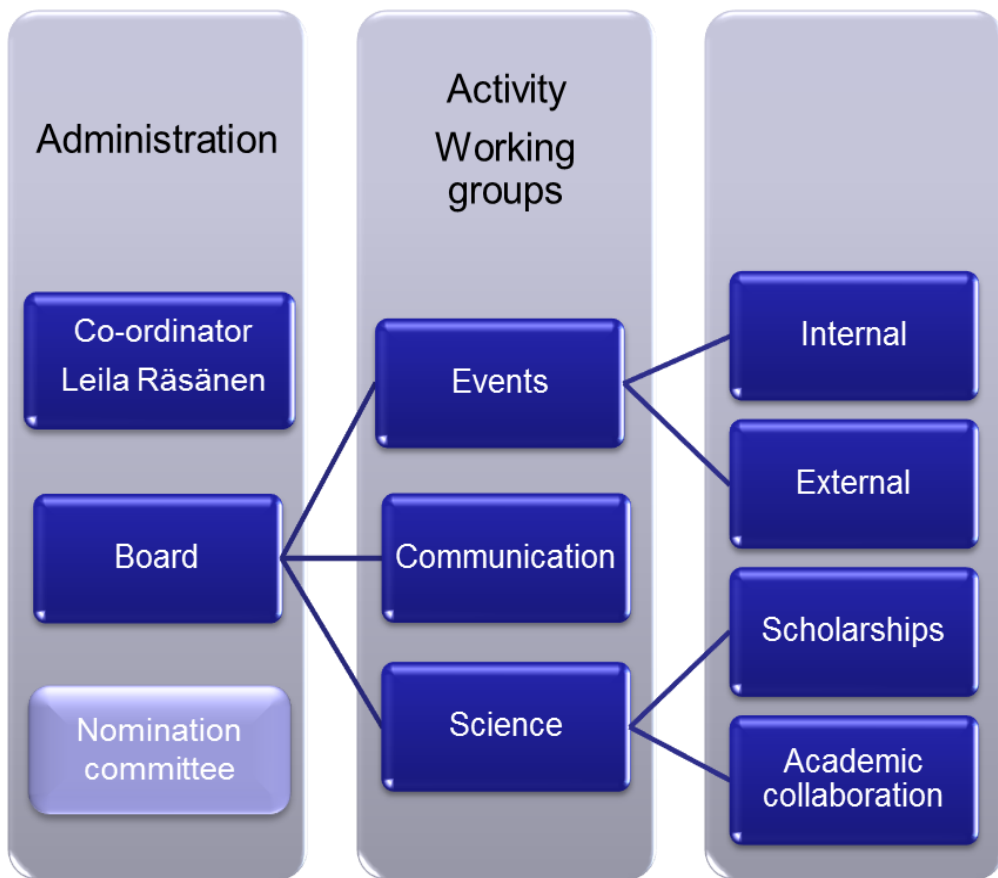
- We have updated our Governance principles
- We have increased our membership fee slightly and introduced a 4th layer to the fee structure
 - For 2017 the Board will propose to amend the fee base to incorporate number of staff (now AUM based)
- We have reshaped our admin
 - New coordinator Leila Räsänen started in August
 - Good admin is the base for future development of our activities

What else happened in 2016?

- We have two new members:
 - University of Tampere
 - Me –säätiö (foundation)

WELCOME!

Our organisation in 2016



Board 2016

- Chairperson Outi Kalpio (LocalTapiola Asset Management)
- Vice-chairperson Annareetta Lumme-Timonen (Solidium)
- members:
 - Leä Jääskeläinen (Danske Capital)
 - Kirsi Keskitalo (Elo)
 - Tiina Landau (Ilmarinen)
 - Vesa Lehtomäki (Korona Invest)
 - Antti Savilaakso (MSCI ESG)
 - Riikka Sievänen (KPMG)

Heads of Working Groups 2016

- Events: Esa Saloranta (EQ)
- Communication: Magdalena Lönnroth (Church Pension Fund)
- Scholarships: Tomas Hildebrandt (Evli)
- Academic: Lauri Ehanti (Aalto)

What are we planning for 2017? Challenges

- How to activate current members?
- Do we know what our members want and need?
- How to organize meaningful events to members – linking ESG issues to investing
- How to provide topical information on ESG to members?
- What should the role of the Board be?

What are we planning for 2017? Board Draft Proposal

- Theme based project group
 - Impact of ESG in Risk/Return
 - Environmental Risks & Opportunities in investing
 - RI Market Study – co-operation with Nordic Sifs
 - Scholarships
- Project groups will innovate and produce ideas – coordinator will arrange events etc

What are we planning for 2017? Board Draft Proposal

- Role of the Board
 - Less admin, more leadership?
 - Finsif's strategy?
 - More responsibility to board members on specific issues, like communication, project?
 - Guidelines for project groups

What are we planning for 2017? Membership

- Review and analysis of member base
 - Membership survey
 - Interviews
 - Database
 - Better understanding of member needs
- Further improving our communication
 - New graphical look for Finsif
 - Further development of our website
 - More activity in social media, blogs etc

Aberdeen



WALLSTREET[®]
FINANSSIPALVELUT



Aberdeen

ethix
SRI ADVISORS



Handelsbanken

*eufex pankki



TITANIUM

VER

VALTION ELÄKERAHASTO
STATENS PENSJONSFOND
THE STATE PENSION FUND

EIRIS Empowering
Responsible
Investment



SITRA

Danske Capital

ÅLANDSBANKEN



IDC
DASOS CAPITAL

EVLI

NORTHERN STAR

Säästöpankkien Varainhoito



SEB

ammattiliitto
pro

Nordea

ILMARINEN

FOURTON

MANDATUM LIFE

HYY
YHTYMÄ

RAHASTOYHTIÖ
FUND MANAGEMENT

Osuuskunta Tradeka-yhtymä

VARMA

KIRKKOHALITUS⁺
Kirkon keskusrahasto

KORONA INVEST

SUOMEN PANKKIIRILIIKE

LÄHITAPIOLA
Varainhoito Oy



G·E·S[®]



GreenStream

Aktia



TEOLLISUUSSIJOTUS

A!
Aalto-yliopisto

FIM

KPMG
cutting through complexity

Turun yliopisto
University of Turku

INVENTURE



HELSINKI CAPITAL PARTNERS